



# PROPITCH

★★★★★

## PITCH REPORT

VENUE | Holywell Stadium, Loughborough University.

REPORT NUMBER | PP2020/155

PREPARED FOR | Matt Le Brun

PREPARED BY | William Relf

DATE | 30/07/2020

USAGE		
Matches	Matches since last visit (2hrs per match)	7
Training (hrs)	Hours since last visit	0
Total Usage (hrs)	Hours	17.50
Lighting	No. of rigs	0
	Model/No of bulbs	Not Applicable
Under-soil Heating	Present/Absent	Absent
	Days Since Last Visit	0

CONDITIONS DURING VISIT		
Surface Condition (dry or wet)	Dry	
Surface Temperature (°C)	18.0	
WEATHER CONDITION	START	END
Ambient Temperature (°C)	19.69	21.58
Humidity (%RH)	63	52
Maximum Wind Speed (km/h)	14.76	16.5
Pressure (mm)	1018	1018
Signature		
Date	30/07/2020	
Test Laboratory	Sports Labs/Propitch	



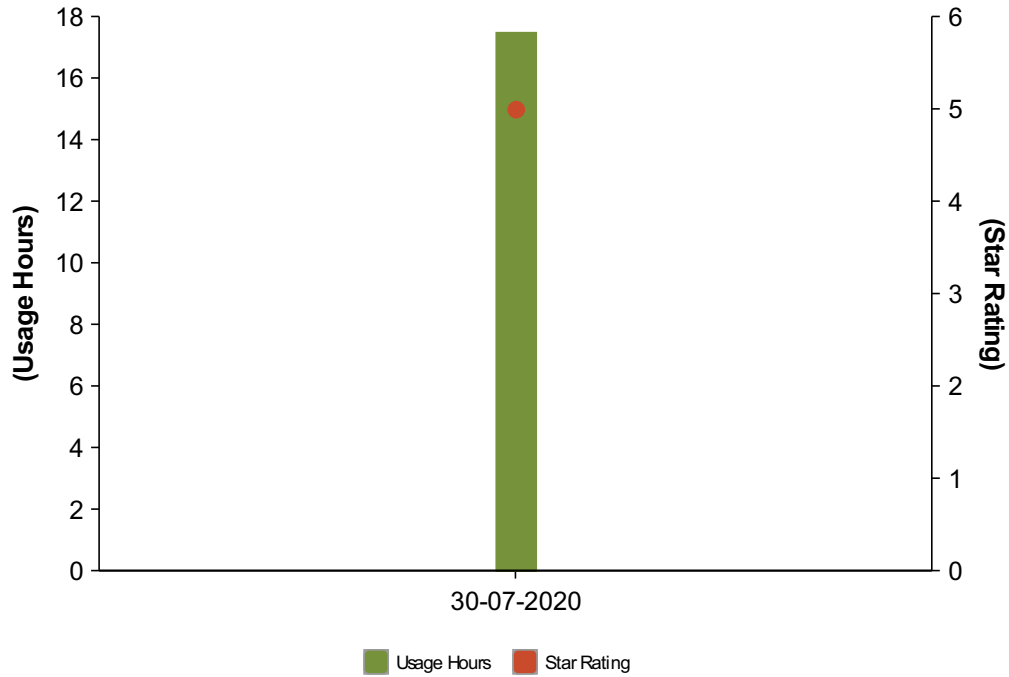
This pitch has achieved a rating of 5 star



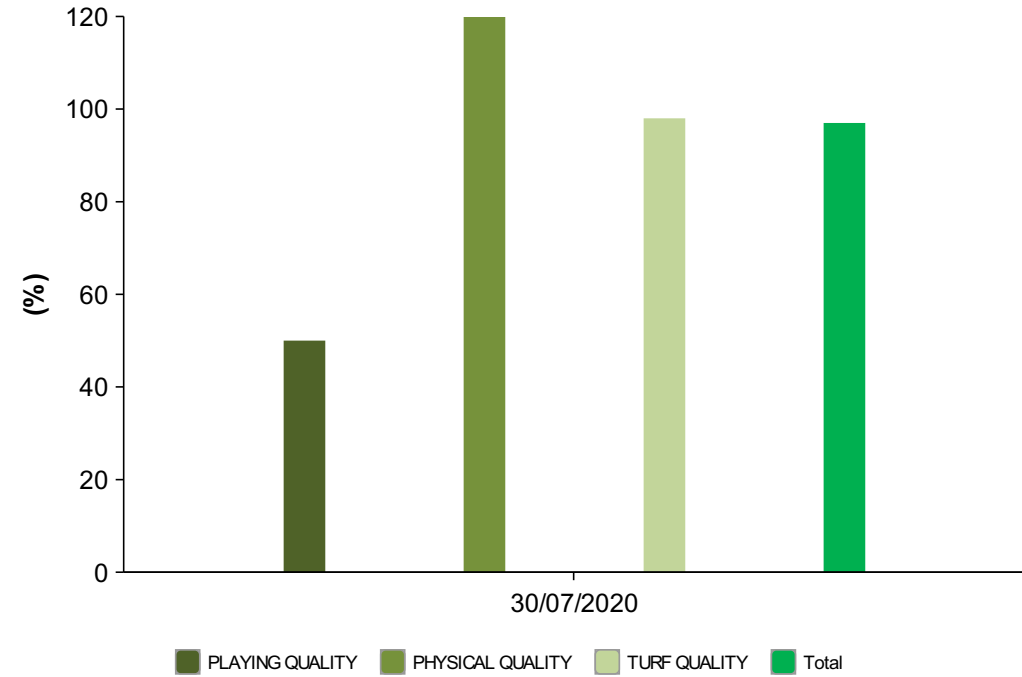
**LOUGHBOROUGH**  
**SPORT**

Stadium or Site Name	Holywell Stadium, Loughborough University.
Address	19-21 Market Pl, Loughborough LE11 3EB, UK
Contact	Matt Le Brun
Contact Number	07985738026
Email Address	matt@advancegrass.com
Grass Type	Perennial Ryegrass
Date of Visit	30/07/2020
Date of Last Visit	30/07/2020
Construction Type	SISGrass

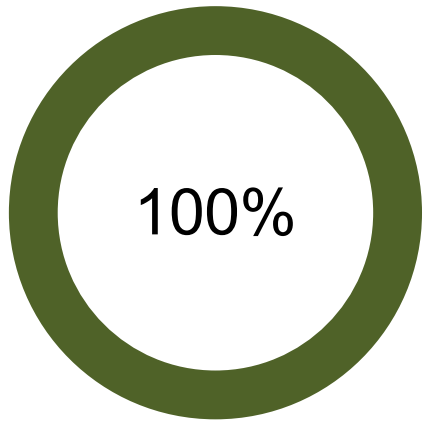
### Usage Hours V Star Rating



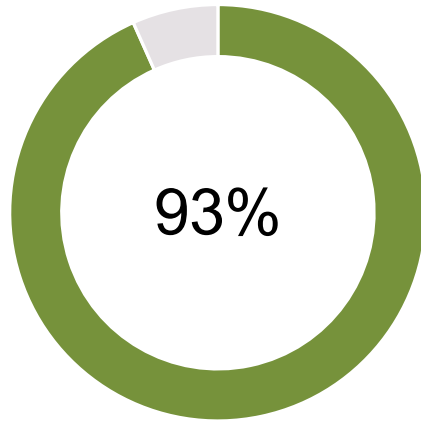
### Score Summary



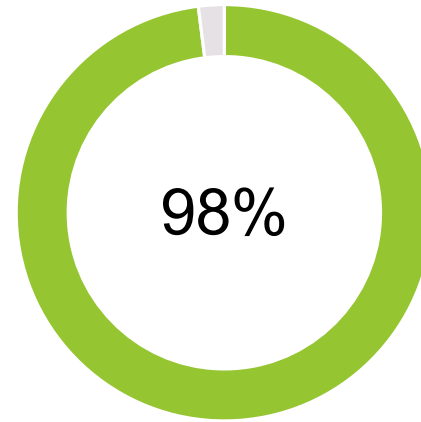
**Disclaimer:** The data contained within this document has been collected on the day of quality assurance only (date specified above).



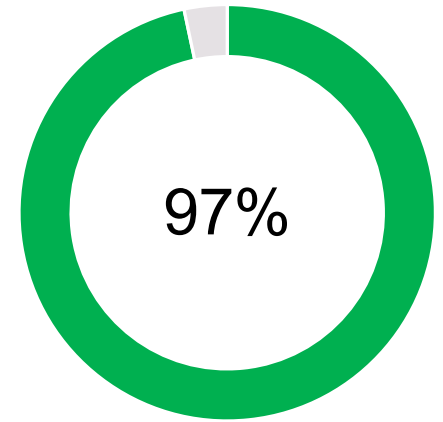
PLAYING QUALITY



PHYSICAL QUALITY



TURF QUALITY



Total



**Note:** % changes from previous assessment shown beside graph.

**STAR RATING 5 STAR**

**SCORE SUMMARY**

Category	Score	Score %
PLAYING QUALITY	10 out of 10	100 out of 100%
PHYSICAL QUALITY	28 out of 30	93 out of 100%
TURF QUALITY	49 out of 50	98 out of 100%

<b>Total Score:</b>	<b>87 out of 90</b>	<b>97 out of 100%</b>
---------------------	---------------------	-----------------------

Star Rating	Score
	0-50
	51-60
	61-70
	71-80
	81-90
	91%-100%

## EXECUTIVE SUMMARY

1. PLAYING QUALITY		PITCH ZONE SCORE										
TEST	Ranges	1	2	3	4	5	6	Average Total Pitch Score	Previous Average Pitch Score	Possible Rating	Awarded Rating	Awarded Score (%)
Traction (nm)	40-50	46	44	46	44	44	48	45		10	10	100
	35-39/51-55									8		
	25-34/56-60									4		
	>60/<25									0		
									Section Total Score:	0 - 10	10	
										0 - 100%	100%	



2. PHYSICAL QUALITY		PITCH ZONE SCORE										
TEST	Ranges	1	2	3	4	5	6	Average Total Pitch Score	Previous Average Pitch Score	Possible Rating	Awarded Rating	Awarded Score (%)
Evenness 3m Straight Edge (mm)	0 - 10	0	0	0	0	0	0	0		10	10	100
	11-15									7		
	16 - 20									5		
	>20									3		
Hardness (g)	70 - 85	93	100	84	96	106	97	96		10	8	80
	60 -69/86-100									8		
	50 - 59/101 - 110									4		
	>110/<50									0		
Infiltration Rate (mm/hr)	200+	800	800	960	600	800	960	820		10	10	100
	100 - 199									6		
	50 - 99									3		
	0 - 49									0		
Moisture Reading at 40 mm	(%)	18	19	20	18	19	20	19		N/A	N/A	N/A
Section Total Score:										3 - 30	28	
										0 - 100%	93%	

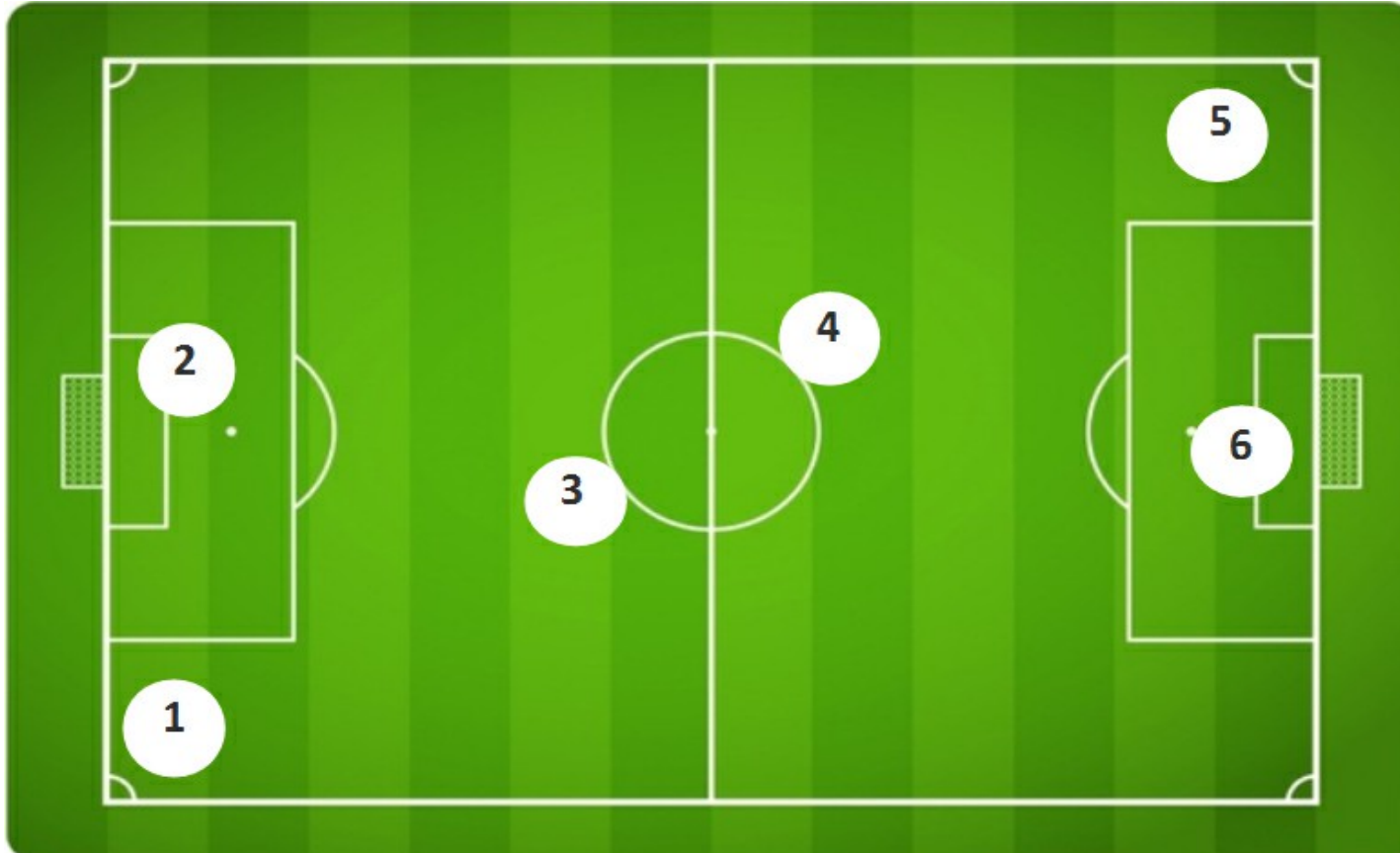
3. TURF QUALITY		PITCH ZONE SCORE										
TEST	Ranges	1	2	3	4	5	6	Average Total Pitch Score	Previous Average Pitch Score	Possible Rating	Awarded Rating	Awarded Score (%)
Total Ground Cover (%)	90-100	95	95	95	95	95	95	95		10	10	100
	80 - 89									7		
	60 - 79									5		
	0 - 59									0		
Weed species (%)	0 - 4.9	1	1	1	1	1	1	1		4	4	100
	5 - 9.9									3		
	10 - 14.9									2		
	>15									1		
Sward height (mm)	22 - 30 (Optimum)	30	30	30	30	30	30	30		N/A	N/A	N/A
Mass root depth (mm) - (Hybrid)	>50	120	120	140	140	160	120	133.3		10	10	100
	40 - 49									7		
	30 - 39									5		
	0 - 29									3		
Thatch depth/Surface Organic Debris (mm)	0 - 4.9	2	2	2	2	2	2	2		4	4	100
	5 -7.9									3		
	8 - 11.9									2		
	>12									1		
Appearance (%)	90 - 100	90	90	90	90	90	90	90		10	10	100
	80 - 89									4		
	70 - 79									2		
	0 - 69									0		

TEST	Ranges	1	2	3	4	5	6	Average Total Pitch Score	Previous Average Pitch Score	Possible Rating	Awarded Rating	Awarded Score (%)
Sward Colour	V.Good (4)	3	3	3	3	3	3	3		4	3	75
	Good (3)									3		
	Satisfactory (2)									2		
	Poor (1)									1		
Diseases (%)	0-25%	4	4	4	4	4	4	4		4	4	100
	26-50%									3		
	51-75%									2		
	76-100%									1		
Insect Pests (%)	0-25%	4	4	4	4	4	4	4		4	4	100
	26-50%									3		
	51-75%									2		
	76-100%									1		
Section Total Score:										8 - 50	49	
										0 - 100%	98%	

## OBSERVATIONS, RECOMMENDATIONS AND ACTION POINTS

Not Applicable

PROPITCH ZONES



**SITE PHOTOGRAPHS**



**Description:-** Pitch in good form

## GLOSSARY

### PLAYING QUALITY

**Shock absorption** measures the ability of the sports surface to absorb impact forces when subjected to forces replicating player movement.

**Surface deformation** measures the degree of deformation when subjected to forces replicating a player running.

**Energy restitution** indicates how much energy is returned to the player from the pitch surface.

**Ball Rebound** is a measure of how high a football bounces when dropped vertically onto the sports surface.

**Ball Roll** measures a surface's pace or speed by determining the resistance the surface offers to a rolling ball.

**Traction** measures the resistance to turning experienced by a studded test plate load in a simulation of a player's body weight.

**Surface evenness** measures how level the total playing area is.

### CONSTRUCTION QUALITY

**Hardness** measures the soil strength and consolidation levels during pitch maintenance using a Clegg Hammer.

**Infiltration Rate** measures how quickly water standing on the playing surface is able to pass into the pitch profile.

### TURF QUALITY

**Total ground cover** is the percentage of grass cover over the entire pitch surface.

**Weed Grasses** is the percentage of weed grasses over the pitch surface.

**Sward Height** is the height the grass plant is being maintained.

**Root Depth** measures the growth of the root system from a core sample.

**Thatch Depth/Surface** organic debris measures the build-up of waste material on the pitch surface.

**Appearance measures** the uniform texture of the grass sward over the entire surface area of the pitch.

**Sward Colour** identifies if there are any areas where the colour of the grass sward is uneven.

**Disease** is a visual assessment of any pitch disease.

**Insects/ Pests** is a visual assessment for signs of physical damage or significant presence





Address | 1 Adam Square, Brucefield Industry Park, Livingston, EH54 9DE, United Kingdom

Contact | [dean.gilasbey@propitch.online](mailto:dean.gilasbey@propitch.online) +44 7977 667709

Contact | [Ian.Craig@propitch.online](mailto:Ian.Craig@propitch.online) +44 7902 336029

Contact | [keith.macpherson@propitch.online](mailto:keith.macpherson@propitch.online) +44 7943 846611